



Bachman Lake Project Athabasca Basin, Saskatchewan

The Bachman Lake Project consists of 5 contiguous claims totaling 11,419 hectares located 22 kilometres northwest of the Key Lake mine and mill complex and 47 kilometres southwest of the producing McArthur River Mine. The haul road connecting the two passes within 13 kilometres of the eastern edge of the property.

Geology

The Bachman Lake property lies entirely within the southeastern Athabasca Basin. The sandstone thickness ranges from 475 metres in the southern portion of the property, to 600 metres in the northern portion. The sandstone overlies granitic gneisses and Wollaston Supergroup metasedimentary rocks of the eastern Mudjatik Domain.



Historical work

- The area was previously explored by SMDC (Cameco), AGIP Canada Ltd., and CEGB. Airborne and ground geophysics defined a long NE-SW conductor (ML-1) on Claim S-107509 and several shorter conductors on S-107750 (ML-2) and S-108151 (CR-2).
- Cameco drilled a total of 7 holes on the ML-1, ML-2, and CR-2 conductors. While drilling on the ML-1 and CR-2 conductors confirmed graphitic basement, the ML-2 conductor has not been confirmed.
- Denison has completed geophysical surveys better defining the historic conductors and drilled three holes. Two of the holes further tested the CR-2 conductor intersecting anomalous geochemistry, and one hole further tested the ML-1 conductor.

Northwest Territories



Directors

Lukas H. Lundin, *Chairman*
Ron F. Hochstein, *President and CEO*
John H. Craig
W. Robert Dengler
Brian D. Edgar
Tae-hwan Kim
William A. Rand
Catherine J.G. Stefan

Management

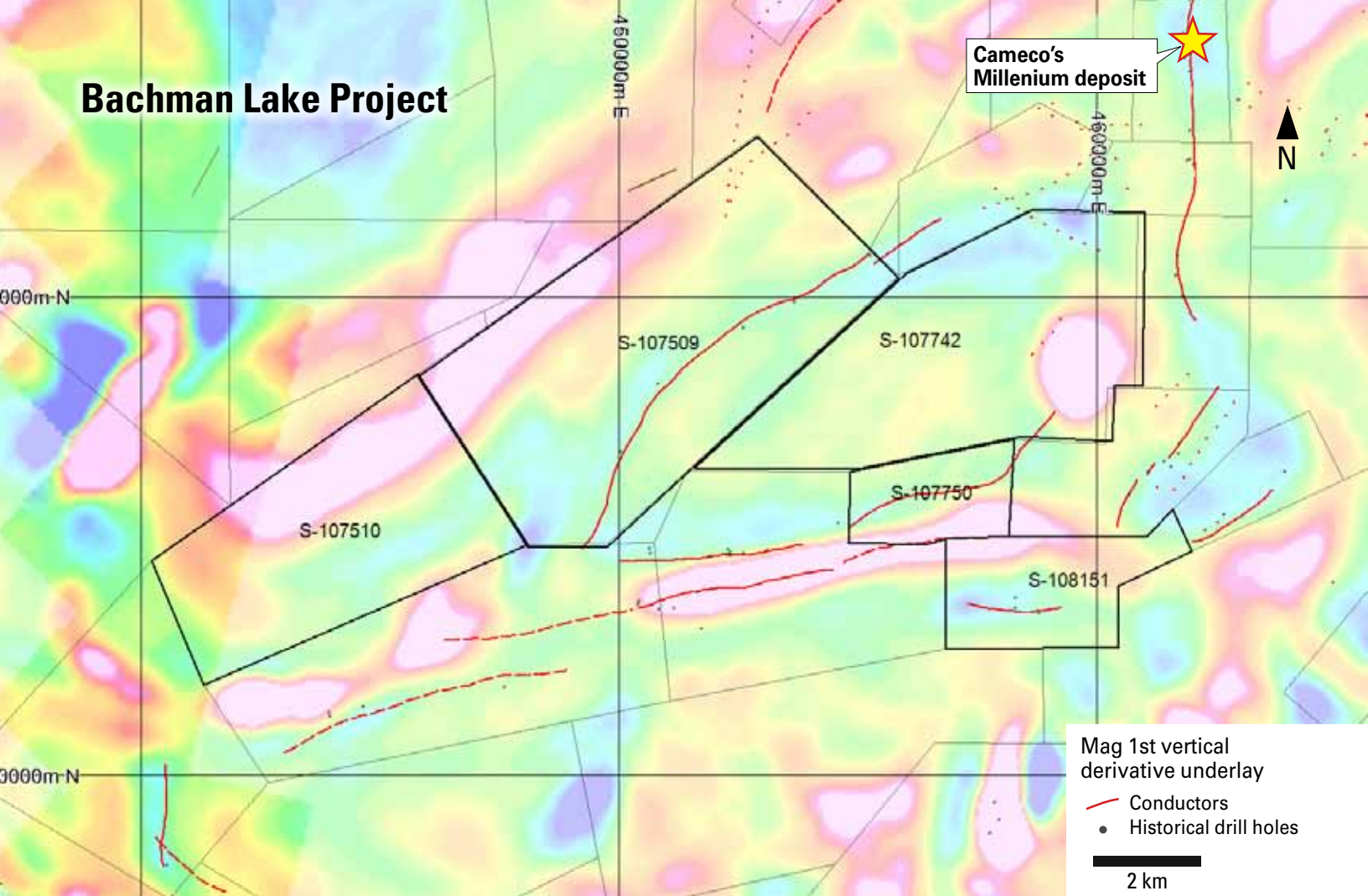
Ron F. Hochstein, *President and CEO*
David D. Cates, *VP Finance, tax and CFO*
Michael J. Schoonderwoerd, *VP Controller*
Terry V. Wetz, *VP Project Development*
Steve Blower, *VP Exploration*
Sheila Colman, *Canadian Counsel and Corporate Secretary*

Denison Mines Corp.

Atrium on Bay
595 Bay Street, Suite 402
Toronto, Ontario
M5G 2C2 Canada

416 979 1991
info@denisonmines.com

Bachman Lake Project



Potential

- **Comeco's Millennium Deposit is 4 kilometres along trend to the north of the Bachman Lake Project providing the property with prospective targets for both unconformity and basement related uranium mineralization.**
- **The Bachman Lake Project contains kilometers of untested or inadequately tested conductors.**
- **The property contains several structural zones with anomalous geochemistry which are key precursors for uranium mineralization.**

Future work planned

- **Drill holes to further define, and follow up anomalous results on the ML-1 and CR-2 conductors.**
- **Use drill holes and potentially borehole electromagnetic geophysical surveys to confirm the ML-2 conductor.**

For more information about this project please contact:

Steve Blower, *Vice President, Exploration*

T 604 689 7842

sblower@denisonmines.com

